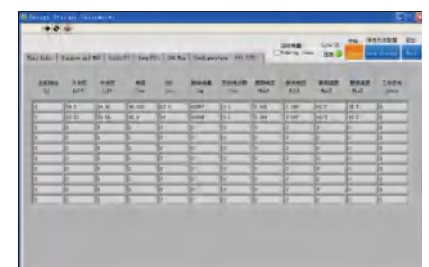
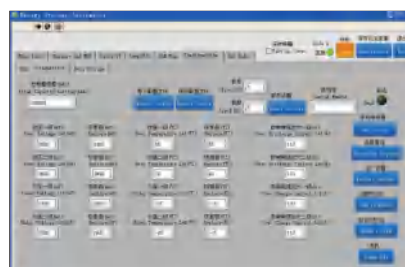
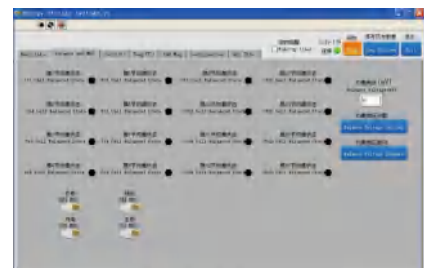


10.24 KWH LiFePO4 Battery Pack

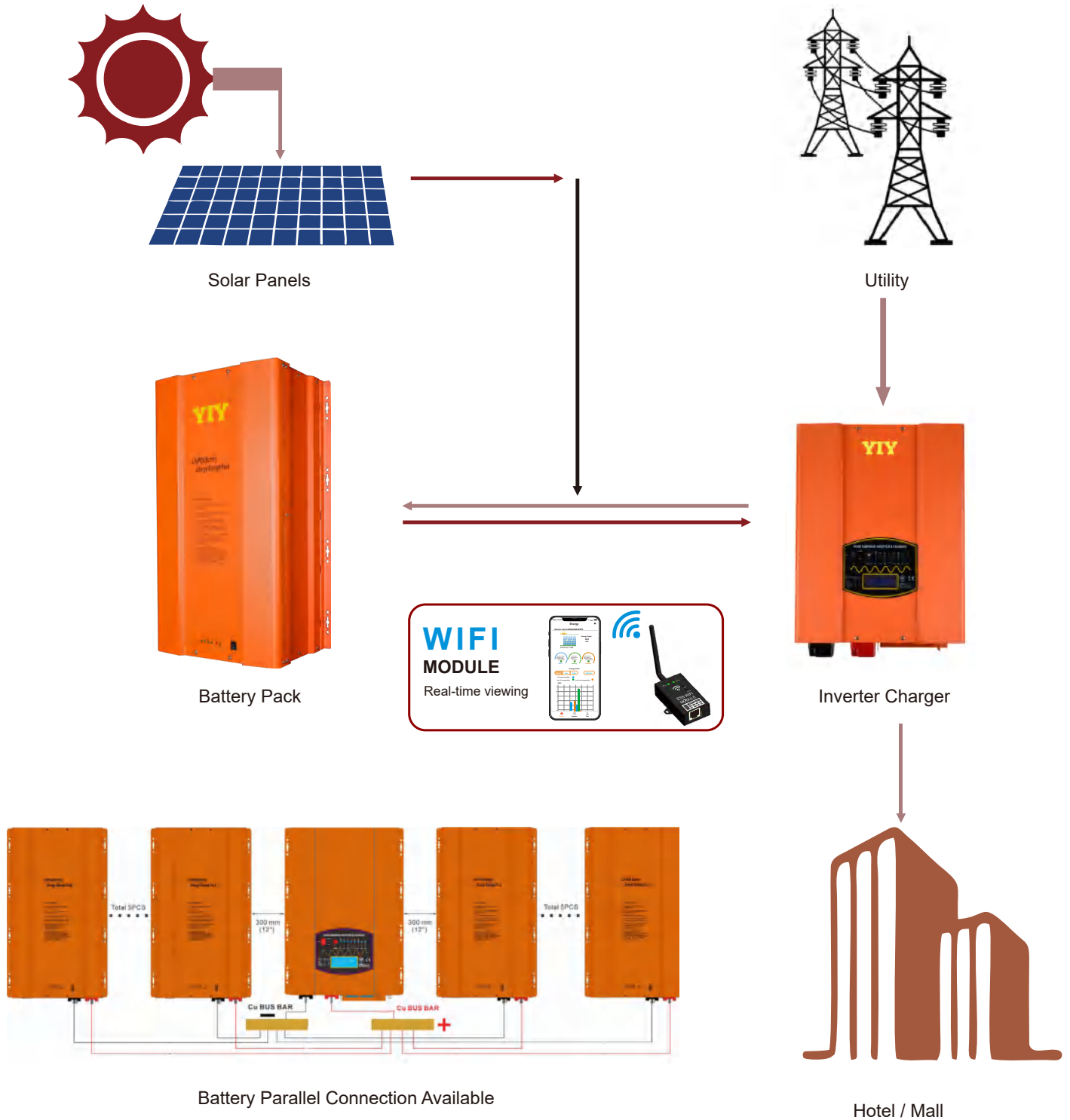
LFP24400H / LFP48200H

- ◆ 32PCS 100AH LIFEP04 Battery inside
- ◆ 25.6//51.2Vdc 10.24KWH rated capacity
- ◆ Long cycle life 3500 times at least on 80%DOD
- ◆ Customized charger make system life maxmization
- ◆ High reliability intelligent BMS
- ◆ Unique automatic calibration active banlancing technology BMS system
- ◆ 25.6/51.2Vdc voltage output suitable for home energy storage system, communication STATIONS AND OTHER APPLICATION
- ◆ Standard CAN &RS485 communication port, can meet the requirement of several packages to connect in parallel, Master & Slave relationship, Monitor and Other prolongation functions.
- ◆ Ip31 Protection, indoor use only.
- ◆ Environment: 0-30℃ ,65% Humidity



Product Application

Energy storage in power system including solar panels, inverter (for AC and DC conversion), and provide backup power for the main electrical backup lines. Household electricity demand different choice of different components.



BASIC Specification

| Battery | | Description | | |
|--|--|------------------------|--------------------|--------------|
| Normal specification | | | | |
| | Model | LFP24400H | LFP48200H | |
| 1 | Rated Voltage | 25.6V | 51.2V | |
| 2 | Rated Capacity | 400Ah | 200Ah | |
| 3 | Rated Energy | 10.24KWH | | |
| 4 | Cell Configuration | 8S4P | 16S2P | |
| 5 | Battery Cell | 3.2V100AH 32PCS | | |
| Standard Charge | | | | |
| 1 | Operation temperature range @charging | 0~45°C | 0~45°C | |
| 2 | Rated charge voltage | 27.6±0.2V | 55.2±0.4V | |
| 3 | Max charge voltage | 28.4±0.2V | 56.8±0.4V | |
| 4 | Overcharge protection | 29.2±0.2V | 58.4±0.4V | |
| 5 | Allowed MAX charge current | 220A withstand 30s | 110A withstand 30s | |
| 6 | Peak charge current | 240A withstand 5s | 120A withstand 5s | |
| 7 | Rated charge current | 200A | 100A | |
| 8 | Recommend charge current | <200A | <100A | |
| Standard discharge | | | | |
| 1 | Operation temperature range @discharging | -20~60°C | -20~60°C | |
| 2 | Output Voltage Range | 20~28Vdc | 40~56Vdc | |
| 3 | Recommend Working Range | 23~27Vdc | 46~54Vdc | |
| 4 | Discharge Cut-off voltage | 20V | 40V | |
| 5 | Allowed MAX discharge current | 440A withstand 30s | 220A withstand 30s | |
| 6 | Peak discharge current | 480A withstand 5s | 240A withstand 5s | |
| 7 | Rated discharge current | 400A | 200A | |
| 8 | Recommend discharge current | <400A | <200A | |
| Communication | | | | |
| 1 | RS485 | For LCD remote | | |
| 2 | CAN | PC control and monitor | | |
| Storage and Transportation requirements | | | | |
| 1 | Storage Temperature | Less than 1 month | -20~35°C | |
| | | Less than 6 month | -10~30°C | |
| 2 | Storage Humidity | 45~75%RH | | |
| 3 | SOC | Storage | 60~75% SOC | |
| | | Transport | 45~55% SOC | |
| Mechanical Characteristics | | | | |
| LFP24400H | Dimension H*W*D | Shipping H*W*D | Weight(N.W.) | Weight(G.W.) |
| LFP48200H | 850*550* 187mm | 1000*670*400mm | 100KG | 110KG |